

TOTO®

CT708E CT708EV Wall Hung Flushometer Toilet



CT708E - Wall Hung Flushometer Toilet
SC534 - Commercial Toilet Seat
TET1LN32#CP - 1.28GPF ECO EFV - Automatic Flushometer Valve



CT708EV - Wall Hung Flushometer Toilet
SC534 - Commercial Toilet Seat
TET2LN32#CP - 1.28GPF ECO EFV - Automatic Flushometer Valve
(flush valve will launch in second half of 2008)

- Powerful siphon jet flush
- Elongated rim
- Low consumption (4.8Lpf/ 1.28 Gpf)
- Available with performance matched TOTO® Flushometer Valve.

Vitreous china wall hung flushometer toilet with elongated rim. Low consumption (4.8Lpf/ 1.28 Gpf) siphon jet flush.

- CT708E
1-1/2" top spud inlet, less seat.
- CT708EV
1-1/2" back spud inlet, less seat.

□ SC534
Elongated, open front seat less cover.

□ SC134
Elongated, open front seat with cover.

TOTO® wall hung toilets require a supporting carrier (supplied by others). Follow carrier manufacturer's installation instructions.

Colors:

Standard #01 Cotton

Optional See price book for additional colors

Recommended flushometer valve:

TOTO® Manual and Electronic Flush Valves are highly recommended for maximum performance.



CT708E CT708EV Wall Hung Flushometer Toilet

■ PERFORMANCE

The TOTO® low consumption flushometer toilet received high ratings during ANSI/ASME testing at independent laboratories. Designed with a powerful siphon jet flush, the bowl offers a large water surface and a 100% glazed trapway.

■ SPECIFICATIONS

Water Use: 1.28 Gpf/4.8Lpf

Flush System: Siphon jet

Min. Water Pressure:

35 psi static

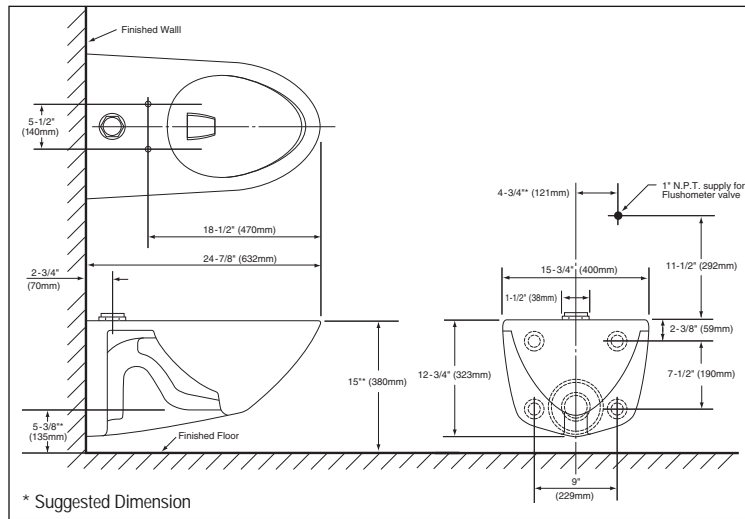
Water surface: 12-5/8" x 10-1/4"

Trap dia: 2-1/8"

Trap seal: 2-5/8"

Warranty: One Year Limited Warranty

Material: Vitreous china



CT708E Top Spud

Shipping Weight:

CT708E-Bowl

49 lbs.

CT708EV-Bowl

53.5 lbs.

Shipping Dimensions:

CT708E-Bowl

15-1/2" L x 15-1/2" W

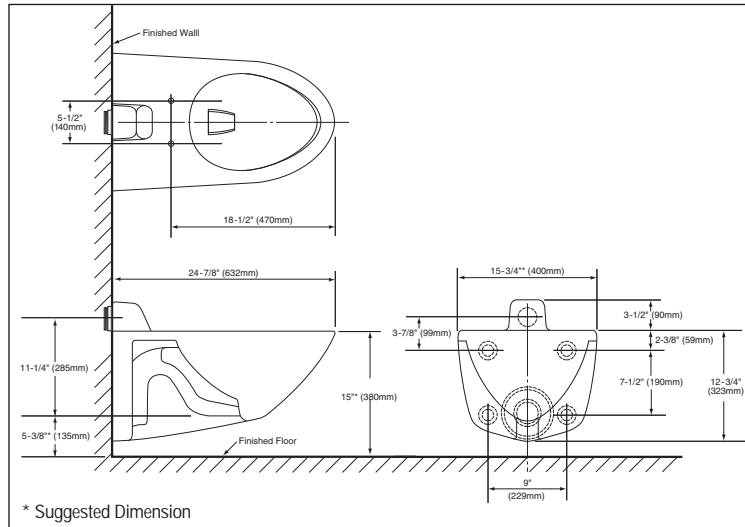
x 26-3/8" H

CT708EV-Bowl

17-1/8" L x 16" W x 26" H

Recommended carrier: Any Jay R. Smith siphon jet support (Four-bolt).

Fixture dimensions and hydraulic performance meet or exceed ANSI/ASME standard A112.19.2 and CAN/CSA B 45 requirements.



CT708EV Back Spud

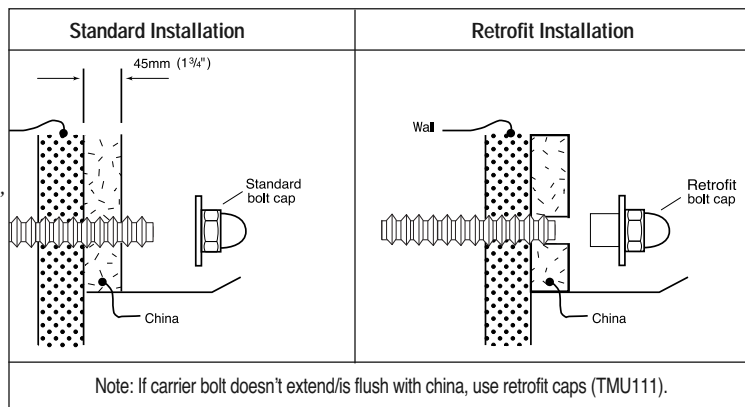
Meets and exceeds ASME A112.19.2 standards for drainline carry distance with a 2% grade and 4" I.D. pipe.

Listing / Approvals: IAPMO/c-UPC, CSA, City of Los Angeles, State of Massachusetts, and others.



Meets the American Disabilities Act Guidelines and ANSI A117.1 requirements where installed so top of rim is 17" from the finished floor.

These dimensions and specifications are subject to change without notice.



TOTO®